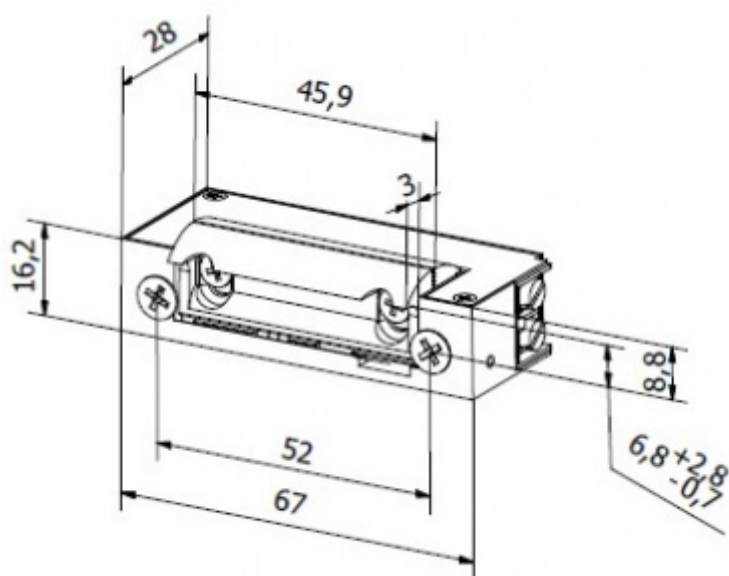


Hartte XSHD-C-series



Versatile fire-resistant electric strikes XSHD-series have CE certificate enabling application in all types of doors with classification EI60 according to Resolution CPR 305/2011 and the EU harmonized standard for electric strikes 14846.

Models of XSHD-C have integrated latch bolt guide, which stands as sliding ramp for latch bolt, preventing damage of door frame and makes it impossible to block latch bolt. Latch bolt guide built-in simplify installation with no need of cut-out the door profile and hides the electric strike from the front side.

Narrow, fire protection electric strikes XSHD-C-series with built-in latch bolt have steel latch with radial shape (it&HASH39;s not outstanding of electric strike outline), adjustable in range of 3,5mm and symmetric housing, what speeds up and make installation easier in DIN-right and DIN-left doors. Moreover punching in door frame of fire-resistant doors is far more simplified.

Characteristic:

- for doors with fire-rate EI60, and for steel doors with fire-resistant rate EI120
- latch bolt guide built-in
- fail-secure (NC normally closed) or fail-safe (NO normally open)
- symmetric housing and radial latch
- size: width 19 mm, height 67 mm, depth 28 mm, size with door status monitoring: 19 mm x 72,6 mm x 28,5 mm
- mechanical strength - break-in resistance class 2
- mechanical strength - opening cycles 200.000
- DIN-left and DIN-right doors
- latch adjustable in range of 3,5mm

Models of HARTTE XSHD-series:

- normally closed
- normally open (mounting on additional lock)
- normally closed low consumption

Above models available also with door status monitoring (M) and/or varistor (V).

Electric specification

	12-24V AC/DC	12AC/DC	12DC	12DC NO	24AC/DC	24DC	24DC NO
Index	XSHD00U-C	XSHD12U-C	XSHD12N-C	XSHD12R-C	XSHD24U-C	XSHD24N-C	XSHD24R-C
Voltage tolerance (V)	AC 10-26 DC 10-26	10-14	10-14	10-14	AC 21-26 DC 20-26	20-26	20-26
Resistance (Ohm)	46	17,6	60	60	60	230	230
Power consumption AC (mA)	12V 185 24V 370	480	-	-	280	-	-
Power consumption DC (mA)	12V 260 24V 520	680	200	200	400	100	100
Continuously powered (100%ED)	yes (12V DC)	no	yes	yes	no	yes	yes

Available models

Index	Type	Voltage			Current		Work type			Functions					Housing	Latch
		06V	12V	24V	AC	DC	NC	NO	Mechanical unlock	Hold-open	Monitoring	Varistor	Strengthen spring	Latch bolt guide		
XSHD00U-C	low-consumption, for continuously powered 12V DC		●	●	●	●	●							●	symmetric, narrow	radial, adjustable
XSHD00UV-C	low-consumption, for continuously powered 12V DC		●	●	●	●	●					●		●	symmetric, narrow	radial, adjustable
XSHD00UM-C	low-consumption, for continuously powered 12V DC		●	●	●	●	●				●			●	symmetric, narrow	radial, adjustable
XSHD00UMV-C	low-consumption, for continuously powered 12V DC		●	●	●	●	●				●	●		●	symmetric, narrow	radial, adjustable
XSHD12U-C	standard		●		●	●	●								symmetric, narrow	radial, adjustable
XSHD12UV-C	standard		●		●	●	●					●			symmetric, narrow	radial, adjustable
XSHD12N-C	low-consumption		●			●	●								symmetric, narrow	radial, adjustable
XSHD12NV-C	low-consumption		●			●	●					●			symmetric, narrow	radial, adjustable
XSHD12R-C	NO		●			●		●							symmetric, narrow	radial, adjustable
XSHD12RV-C	NO		●			●		●				●			symmetric, narrow	radial, adjustable
XSHD24U-C	standard			●	●	●	●								symmetric, narrow	radial, adjustable
XSHD24UV-C	standard			●	●	●	●					●			symmetric, narrow	radial, adjustable
XSHD24N-C	low-consumption			●		●	●								symmetric, narrow	radial, adjustable
XSHD24NV-C	low-consumption			●		●	●					●			symmetric, narrow	radial, adjustable
XSHD24R-C	NO			●		●		●							symmetric, narrow	radial, adjustable
XSHD24RV-C	NO			●		●		●				●			symmetric, narrow	radial, adjustable
XSHD12UM-C	standard		●		●	●	●				●				symmetric, narrow	radial, adjustable
XSHD12UMV-C	standard		●		●	●	●				●	●			symmetric, narrow	radial, adjustable
XSHD12NM-C	low-consumption		●			●	●				●				symmetric, narrow	radial, adjustable
XSHD12NMV-C	low-consumption		●			●	●				●	●			symmetric, narrow	radial, adjustable
XSHD12RM-C	NO		●			●		●			●				symmetric, narrow	radial, adjustable
XSHD12RMV-C	NO		●			●		●			●	●			symmetric, narrow	radial, adjustable
XSHD24UM-C	standard			●	●	●	●				●				symmetric, narrow	radial, adjustable
XSHD24UMV	standard			●	●	●	●				●	●			symmetric, narrow	radial, adjustable
XSHD24NM	low-consumption			●		●	●				●				symmetric, narrow	radial, adjustable
XSHD24NMV	low-consumption			●		●	●				●	●			symmetric, narrow	radial, adjustable
XSHD24RM	NO			●		●		●			●				symmetric, narrow	radial, adjustable
XSHD24RMV	NO			●		●		●			●	●			symmetric, narrow	radial, adjustable

[Helpful informations](#)



BIRA Spółka z ograniczoną odpowiedzialnością Spółka Komandytowa

ul. Falencka 1B, 05-090 Janki

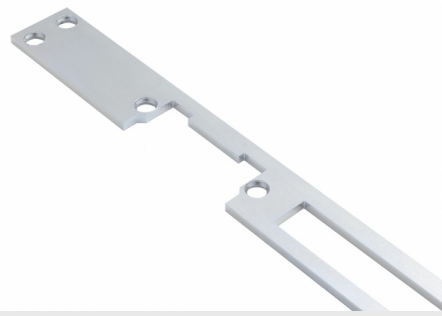
NIP: 5342544757

bira@bira.pl tel: +48 22 723 90 17

Matching mounting elements

Flat plates

- made out of different materials: stainless steel, standard steel, anodized aluminum
- polished, plated, galvanized or painted



Angle plates

- made out of steel or stainless steel
- plated, galvanized or painted



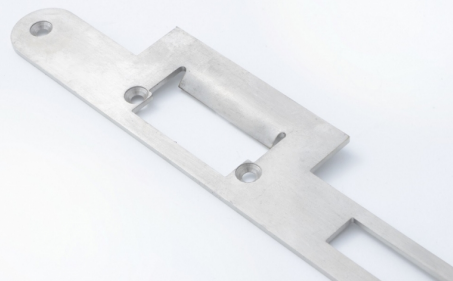
Boxes

- made out of steel
- galvanized or painted
- front or side mounting



Special plates with latch bolt guide securing profile

- made out of steel or stainless steel
- plated, galvanized or painted
- Wykonane ze stali nierdzewnej lub zwykłej ocynkowanej, niklowanej lub lakierowanej



Blachy do wmurowania

Wykonane ze stali zwykłej ocynkowanej, montowane w furtkach

Mounting brackets for order

- striking plates adapted to customer needs