

Electric strikes XS-series are narrow (only 16.2 mm width), symmetrical and have a small dimensions enabling mounting in narrow profiles and door frames. They fit perfectly to left and right doors of various types. Radius latch (it is not outstanding out of electric strike outline) and adjustment in the range of 3,5mm requires less punching, which simplifies and accelerate installation. Available also with monitoring (M), special version for doors with lock latch pressing on electric strikes (-B) and with built-in latch guide for non-rebated doors (C).

Characteristic:

- fail-secure (NC normally closed) or fail-safe (NO normally open)
- symmetric housing
- size: width 16,2mm, height 67mm, depth 28mm, size of version with door status monitoring (M): 16,2mm x 72,6mm x 28,5mm
- mechanical strength - break-in resistance 3000 N (300kg)
- mechanical strength - opening cycles 200 000
- DIN-left and DIN-right doors
- adjustable latch up to 3,5mm
- radial shape of the latch - when opening the latch is not going beyond the outline of electric strike

Models of HARTTE XS-series:

- normally closed (U)
- with hold-open function (P)
- with mechanical unlocking (W)
- with hold-open and mechanical unlocking function (PW)
- door status monitoring (M)
- normally open (R)
- for continuous working 100%ED
- with strengthened spring for doors with latch pressing (-B)
- with latch guide (-C)

| | 12AC | 12AC/DC | 12DC rewers | 24DC rewers | 24AC/DC | 12-24 AC/DC |
|-------------------------------------|-------------|----------------------|------------------------|------------------------|----------------------|------------------------|
| Index | XS06A | XS12U | XS12R | XS24R | XS24U | XS00U |
| Voltage tolerance (V) | AC 6-12 | AC 10-14 DC 10-14 | DC 10-14 | DC 20-26 | AC 21-26 DC 20-26 | AC 11-26 DC 11-26 |
| Resistance (Ohm) | 8 | 17,6 | 60 | 230 | 60 | 46 |
| Power consumption AC (mA) | 1060 | 480 | - | - | 280 | 185(12V) 370(24V) |
| Power consumption DC (mA) | - | 680 | 200 | 100 | 400 | 260 (12V) 520 (24V) |
| Continuously powered (100%ED) | no | no | yes | yes | no | yes (12V DC) |

Available models

| Index | Type | Voltage | | | Current | | Work type | | Functions | | | | | Housing | Latch |
|----------|---------------------------------------|---------|-----|-----|---------|----|-----------|----|----------------------|-----------|------------|-------------------|------------------|------------------|-------------------|
| | | 06V | 12V | 24V | AC | DC | NC | NO | Mechanical unlocking | Hold-open | Monitoring | Strengthen spring | Latch bolt guide | | |
| XS00U | continuously powered, low consumption | | ● | ● | ● | ● | ● | | | | | | | Symmetric narrow | Radial adjustable |
| XS00UP | continuously powered, low consumption | | ● | ● | ● | ● | ● | | | ● | | | | Symmetric narrow | Radial adjustable |
| XS00UW | continuously powered, low consumption | | ● | ● | ● | ● | ● | | ● | | | | | Symmetric narrow | Radial adjustable |
| XS00UPW | continuously powered, low consumption | | ● | ● | ● | ● | ● | | ● | ● | | | | Symmetric narrow | Radial adjustable |
| XS06A | standard | ● | | | ● | | ● | | | | | | | Symmetric narrow | Radial adjustable |
| XS06AP | standard | ● | | | ● | | ● | | | ● | | | | Symmetric narrow | Radial adjustable |
| XS06AW | standard | ● | | | ● | | ● | | ● | | | | | Symmetric narrow | Radial adjustable |
| XS06APW | standard | ● | | | ● | | ● | | ● | ● | | | | Symmetric narrow | Radial adjustable |
| XS12U | standard | | ● | | ● | ● | ● | | | | | | | Symmetric narrow | Radial adjustable |
| XS12UP | standard | | ● | | ● | ● | ● | | | ● | | | | Symmetric narrow | Radial adjustable |
| XS12UW | standard | | ● | | ● | ● | ● | | ● | | | | | Symmetric narrow | Radial adjustable |
| XS12UPW | standard | | ● | | ● | ● | ● | | ● | ● | | | | Symmetric narrow | Radial adjustable |
| XS12R | NO | | ● | | | ● | | ● | | | | | | Symmetric narrow | Radial adjustable |
| XS24U | standard | | | ● | ● | ● | ● | | | | | | | Symmetric narrow | Radial adjustable |
| XS24UP | standard | | | ● | ● | ● | ● | | | ● | | | | Symmetric narrow | Radial adjustable |
| XS24UW | standard | | | ● | ● | ● | ● | | ● | | | | | Symmetric narrow | Radial adjustable |
| XS24UPW | standard | | | ● | ● | ● | ● | | ● | ● | | | | Symmetric narrow | Radial adjustable |
| XS24R | NO | | | ● | | ● | | ● | | | | | | Symmetric narrow | Radial adjustable |
| XS00UM | continuously powered, low consumption | | ● | ● | ● | ● | ● | | | | ● | | | Symmetric narrow | Radial adjustable |
| XS00UPM | continuously powered, low consumption | | ● | ● | ● | ● | ● | | | ● | ● | | | Symmetric narrow | Radial adjustable |
| XS00UWM | continuously powered, low consumption | | ● | ● | ● | ● | ● | | ● | | ● | | | Symmetric narrow | Radial adjustable |
| XS00UPWM | continuously powered, low consumption | | ● | ● | ● | ● | ● | | ● | ● | ● | | | Symmetric narrow | Radial adjustable |
| XS06AM | standard | ● | | | ● | | ● | | | | ● | | | Symmetric narrow | Radial adjustable |
| XS06APM | standard | ● | | | ● | | ● | | | ● | ● | | | Symmetric narrow | Radial adjustable |
| XS06AWM | standard | ● | | | ● | | ● | | ● | | ● | | | Symmetric narrow | Radial adjustable |
| XS06APWM | standard | ● | | | ● | | ● | | ● | ● | ● | | | Symmetric narrow | Radial adjustable |
| XS12UM | standard | | ● | | ● | ● | ● | | | | ● | | | Symmetric narrow | Radial adjustable |
| XS12UPM | standard | | ● | | ● | ● | ● | | | ● | ● | | | Symmetric narrow | Radial adjustable |
| XS12UWM | standard | | ● | | ● | ● | ● | | ● | | ● | | | Symmetric narrow | Radial adjustable |

| Index | Type | Voltage | | Current | | Work type | Functions | | | | Housing | Latch |
|------------|---------------------------------------|---------|---|---------|---|-----------|-----------|---|---|---|------------------|-------------------|
| XS12UPWM | standard | ● | | ● | ● | ● | ● | ● | ● | | Symmetric narrow | Radial adjustable |
| XS12RM | NO | ● | | | ● | ● | | | ● | | Symmetric narrow | Radial adjustable |
| XS24UM | standard | | ● | ● | ● | ● | | | ● | | Symmetric narrow | Radial adjustable |
| XS24UPM | standard | | ● | ● | ● | ● | | ● | ● | | Symmetric narrow | Radial adjustable |
| XS24UWM | standard | | ● | ● | ● | ● | | | ● | | Symmetric narrow | Radial adjustable |
| XS24UPWM | standard | | ● | ● | ● | ● | | ● | ● | ● | Symmetric narrow | Radial adjustable |
| XS24RM | NO | | ● | | ● | ● | | | ● | | Symmetric narrow | Radial adjustable |
| XS00U-C | continuously powered, low consumption | ● | ● | ● | ● | ● | | ● | ● | ● | Symmetric narrow | Radial adjustable |
| XS00UP-C | continuously powered, low consumption | ● | ● | ● | ● | ● | | ● | | ● | Symmetric narrow | Radial adjustable |
| XS00UW-C | continuously powered, low consumption | ● | ● | ● | ● | ● | ● | | | ● | Symmetric narrow | Radial adjustable |
| XS00UPW-C | continuously powered, low consumption | ● | ● | ● | ● | ● | ● | ● | | ● | Symmetric narrow | Radial adjustable |
| XS00U-BC | continuously powered, low consumption | ● | ● | ● | ● | ● | | | ● | ● | Symmetric narrow | Radial adjustable |
| XS00UW-BC | continuously powered, low consumption | ● | ● | ● | ● | ● | ● | | | ● | Symmetric narrow | Radial adjustable |
| XS12U-BC | standard | ● | | ● | ● | ● | | | | ● | Symmetric narrow | Radial adjustable |
| XS12UW-BC | standard | ● | | ● | ● | ● | ● | | | ● | Symmetric narrow | Radial adjustable |
| XS12R-BC | NO | ● | ● | ● | | ● | | | | ● | Symmetric narrow | Radial adjustable |
| XS00UM-C | continuously powered, low consumption | ● | ● | ● | ● | ● | | ● | ● | ● | Symmetric narrow | Radial adjustable |
| XS00UPM-C | continuously powered, low consumption | ● | ● | ● | ● | ● | | ● | ● | ● | Symmetric narrow | Radial adjustable |
| XS00UWM-C | continuously powered, low consumption | ● | ● | ● | ● | ● | ● | | ● | ● | Symmetric narrow | Radial adjustable |
| XS00UPWM-C | continuously powered, low consumption | ● | ● | ● | ● | ● | ● | ● | ● | ● | Symmetric narrow | Radial adjustable |
| XS12UM-C | standard | ● | | ● | ● | ● | | | ● | ● | Symmetric narrow | Radial adjustable |
| XS12UPM-C | standard | ● | | ● | ● | ● | | ● | ● | ● | Symmetric narrow | Radial adjustable |
| XS12UWM-C | standard | ● | | ● | ● | ● | ● | | | ● | Symmetric narrow | Radial adjustable |
| XS12UPWM-C | standard | ● | | ● | ● | ● | ● | ● | ● | ● | Symmetric narrow | Radial adjustable |
| XS12RM-C | NO | ● | | | ● | ● | | | ● | ● | Symmetric narrow | Radial adjustable |
| XS24UM-C | standard | | ● | ● | ● | ● | | | ● | ● | Symmetric narrow | Radial adjustable |
| XS24UPM-C | standard | | ● | ● | ● | ● | | ● | ● | ● | Symmetric narrow | Radial adjustable |
| XS24UWM-C | standard | | ● | ● | ● | ● | ● | | | ● | Symmetric narrow | Radial adjustable |
| XS24UPWM-C | standard | | ● | ● | ● | ● | ● | ● | ● | ● | Symmetric narrow | Radial adjustable |
| XS24RM-C | NO | | ● | | ● | ● | | | ● | ● | Symmetric narrow | Radial adjustable |
| XS00U-B | continuously powered, low consumption | ● | ● | ● | ● | ● | | | | | Symmetric narrow | Radial adjustable |
| XS00UP-B | continuously powered, low consumption | ● | ● | ● | ● | ● | | ● | | | Symmetric narrow | Radial adjustable |

| Index | Type | Voltage | | Current | | Work type | | Functions | | | Housing | Latch |
|------------|--|---------|---|---------|---|-----------|---|-----------|---|---|------------------|-------------------|
| XS00UW-B | continously powered, low consumption | | | | | ● | ● | | | | Symmetric narrow | Radial adjustable |
| XS00UPW-B | continously powered, low consumption | | | | | ● | ● | ● | | | Symmetric narrow | Radial adjustable |
| XS12U-B | standard | ● | | ● | ● | ● | | | | | Symmetric narrow | Radial adjustable |
| XS12UP-B | standard | ● | | ● | ● | ● | | | ● | | Symmetric narrow | Radial adjustable |
| XS12UW-B | standard | ● | | ● | ● | ● | ● | | | | Symmetric narrow | Radial adjustable |
| XS12UPW-B | standard | ● | | ● | ● | ● | ● | ● | | | Symmetric narrow | Radial adjustable |
| XS12R-B | NO | ● | | | ● | | ● | | | | Symmetric narrow | Radial adjustable |
| XS24U-B | standard | | ● | ● | ● | ● | | | | | Symmetric narrow | Radial adjustable |
| XS24UP-B | standard | | ● | ● | ● | ● | | | ● | | Symmetric narrow | Radial adjustable |
| XS24UW-B | standard | | ● | ● | ● | ● | ● | | | | Symmetric narrow | Radial adjustable |
| XS24UPW-B | standard | | ● | ● | ● | ● | ● | ● | | | Symmetric narrow | Radial adjustable |
| XS24R-B | NO | | ● | | ● | | ● | | | | Symmetric narrow | Radial adjustable |
| XS12U-C | standard | ● | | ● | ● | ● | | ● | ● | | Symmetric narrow | Radial adjustable |
| XS12UP-C | standard | ● | | ● | ● | ● | | ● | ● | | Symmetric narrow | Radial adjustable |
| XS12UW-C | standard | ● | | ● | ● | ● | ● | ● | ● | | Symmetric narrow | Radial adjustable |
| XS12UPW-C | standard | ● | | ● | ● | ● | ● | ● | ● | | Symmetric narrow | Radial adjustable |
| XS12R-C | NO | ● | | ● | ● | | ● | ● | ● | | Symmetric narrow | Radial adjustable |
| XS24U-C | standard | | ● | | ● | ● | | ● | ● | | Symmetric narrow | Radial adjustable |
| XS24UP-C | standard | | ● | ● | ● | ● | | ● | ● | | Symmetric narrow | Radial adjustable |
| XS24UW-C | standard | | ● | ● | ● | ● | ● | ● | ● | | Symmetric narrow | Radial adjustable |
| XS24UPW-C | standard | | ● | ● | ● | ● | ● | ● | ● | | Symmetric narrow | Radial adjustable |
| XS24R-C | NO | | ● | | ● | | ● | ● | ● | | Symmetric narrow | Radial adjustable |
| XS00U-CF | continously powered, low consumption, without washer | ● | ● | ● | ● | ● | | ● | ● | | Symmetric narrow | Radial adjustable |
| XS00UP-CF | continously powered, low consumption, without washer | ● | ● | ● | ● | ● | | ● | ● | ● | Symmetric narrow | Radial adjustable |
| XS00UW-CF | continously powered, low consumption, without washer | ● | ● | ● | ● | ● | ● | ● | ● | | Symmetric narrow | Radial adjustable |
| XS00UPW-CF | continously powered, low consumption, without washer | ● | ● | ● | ● | ● | ● | ● | ● | ● | Symmetric narrow | Radial adjustable |
| XS12U-CF | standard, withut washer | ● | | ● | ● | ● | | ● | ● | | Symmetric narrow | Radial adjustable |
| XS12UP-CF | standard, without washer | ● | | ● | ● | ● | | ● | ● | | Symmetric narrow | Radial adjustable |
| XS12UW-CF | standard, without washer | ● | | ● | ● | ● | ● | ● | ● | | Symmetric narrow | Radial adjustable |
| XS12UPW-CF | standard, without washer | ● | | ● | ● | ● | ● | ● | ● | | Symmetric narrow | Radial adjustable |

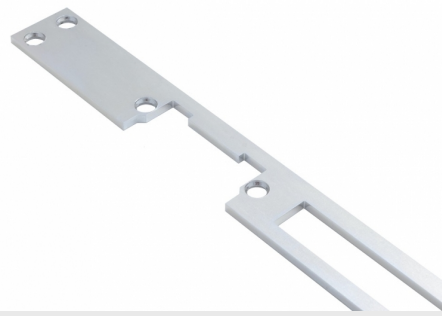
| Index | Type | Voltage | Current | Work type | Functions | Housing | Latch |
|----------|--------------------------|---------|---------|-----------|-----------|---------|------------------------------------|
| XS12R-CF | NO, without washer | ● | ● | ● | ● | ● | Symmetric narrow Radial adjustable |
| XS24U-CF | standard, without washer | ● | ● | ● | ● | ● | Symmetric narrow Radial adjustable |
| XS24R-CF | NO, without washer | ● | ● | ● | ● | ● | Symmetric narrow Radial adjustable |

[Wyjaśnienie funkcji](#)

Matching mounting elements

Flat plates

- made out of different materials: stainless steel, standard steel, anodized aluminum
- polished, plated, galvanized or painted



Angle plates

- made out of steel or stainless steel
- plated, galvanized or painted



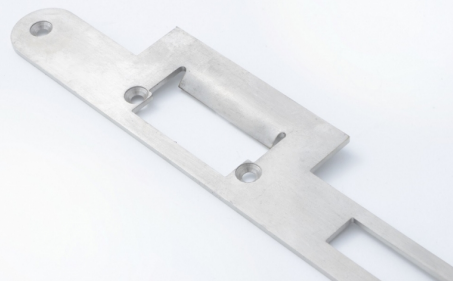
Boxes

- made out of steel
- galvanized or painted
- front or side mounting



Special plates with latch bolt guide securing profile

- made out of steel or stainless steel
- plated, galvanized or painted
- Wykonane ze stali nierdzewnej lub zwykłej ocynkowanej, niklowanej lub lakierowanej



Blachy do wmurowania

Wykonane ze stali zwykłej ocynkowanej, montowane w furtkach

Mounting brackets for order

- striking plates adapted to customer needs