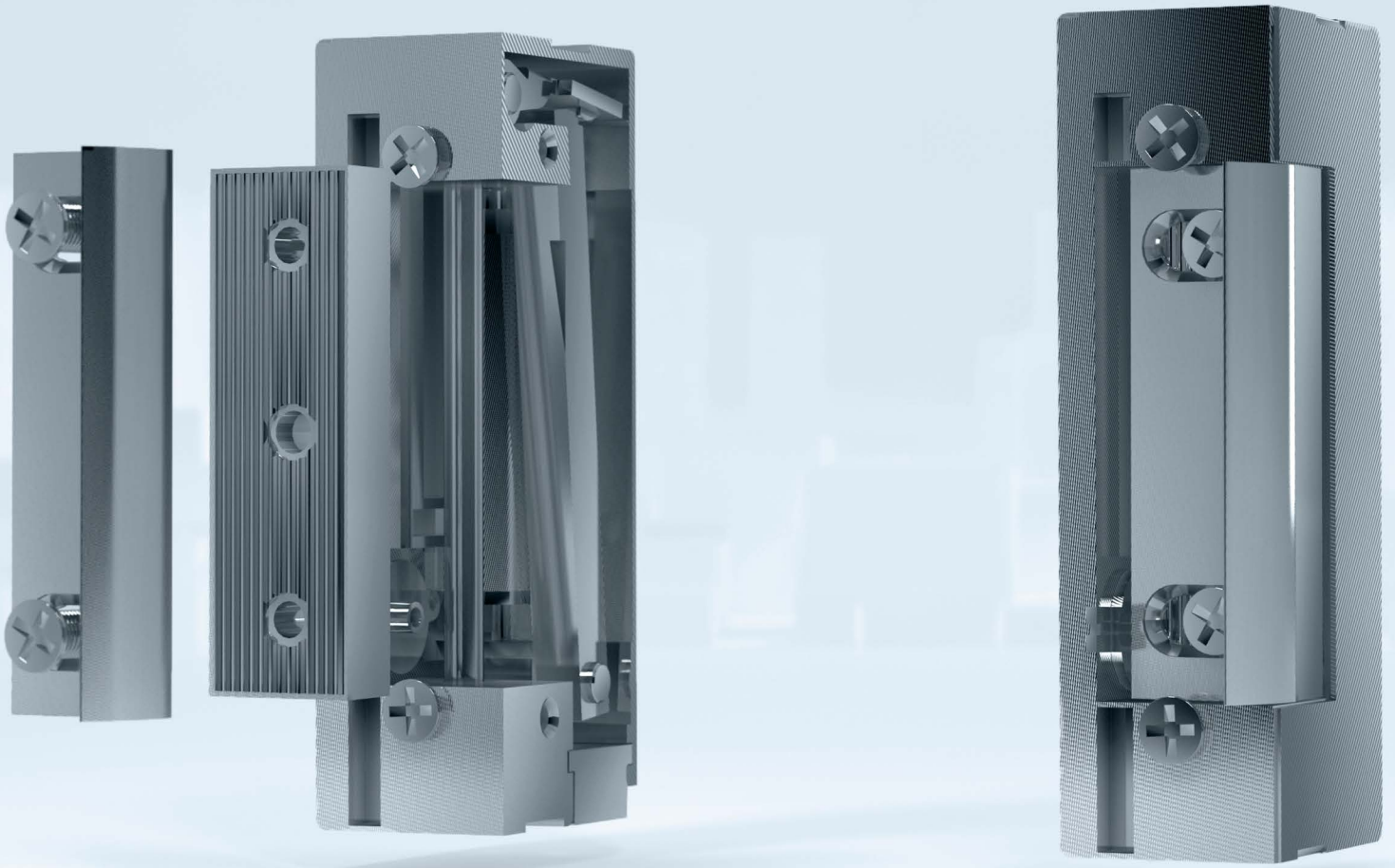


# BIRA



## SOLUTIONS FOR FIRE DOORS

2016/2017

**BIRA TRADE** is a privately owned company specialising in development, manufacture and distribution of mechanical and electromechanical security solutions for access control systems. Know-how and 30-years experience on security market enable to offer products of the highest quality, designed and manufactured in accordance with the innovative technologies, the European standards and customers' expectations.

The company is located near to Warsaw in Poland where is the sales office and production site. Competent and well-qualified personell as well as appropriatelly equipped production site ensure high quality of products, flexibility of production and prompt deliveries to customers in Poland and abroad. In production processes the company uses innovative solutions and high quality components to meet expectations of customers' and final users.

Satisfaction of our customers is the most important for us, thanks to this we gain their trust and establish long-term cooperation. **BIRA TRADE** – wide offer of products, professional service and technical support.

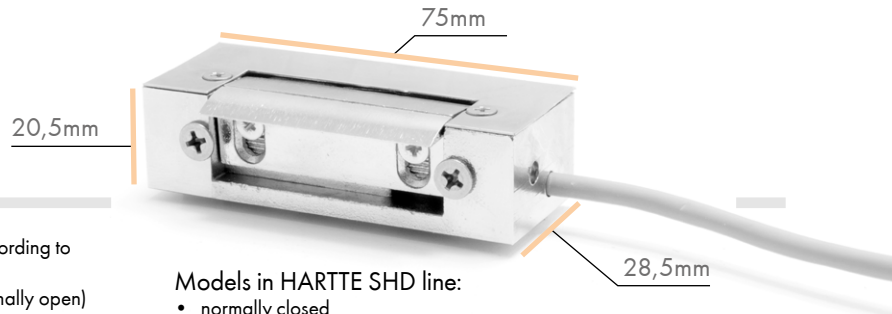
## OUR PRODUCTS

**BIRA TRADE** has been producing electric strikes for more than 20 years which enables to respond to demands of both native and export markets. The company offers standard products for security systems including electric strikes, electromagnets, door holders, cabinet locks, mechanical locks as well as solutions dedicated for fire protection systems. **BIRA TRADE** produces fittings, mounting elements and accessories as well as tailor-made products developed and manufactured according to customers' requirements and for their special purposes.

**BIRA TRADE** produces solutions under BIRATRONIK, BIRA and HARTTE brand names which are commonly used in commercial and public buildings as well as private residences. As a producer **BIRA TRADE** offers also OEM production and development of innovative, tailor-made solutions.

Analysing market and customers' needs we are working continuously on new solutions and products, which will complete our offer and meet expectations of clients and at the same time improve comfort and safety of final users.

# ELECTRIC STRIKES HARTTE SHD-SERIES



- for fire-resistant doors (classification EI60) certified according to 14846(certificate 1488-CPR-0508/W)
- fail-secure (NC normally closed) or fail-safe (NO normally open)
- symmetric housing
- size: width 20,5mm, height 75mm, depth 28,5mm, size of version with door status monitoring: width 20,5mm x height 81,2mm x depth 28,5mm
- mechanical strength – break-in resistance 3500 N (350 kg)
- mechanical strength – opening cycles 200.000
- DIN-left and DIN-right doors
- latch adjustable up to 4mm

**Models in HARTTE SHD line:**

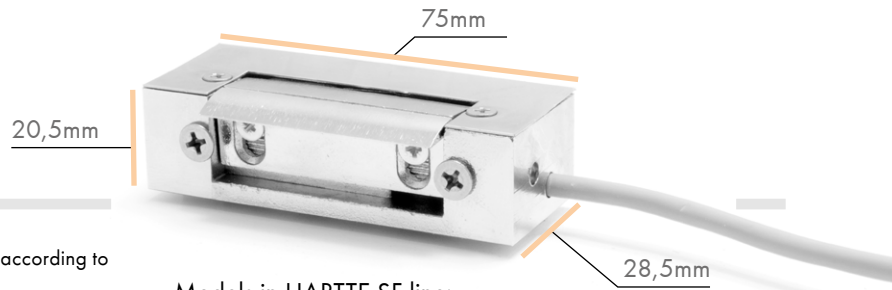
- normally closed
  - normally open (mounting on additional lock)
  - normally closed for continuous working
- Above models available also with door status monitoring (M) and/or varistor (V)

**CATEGORY**

**COIL**

	12 AC/DC	12DC	12DC NO	24AC/DC	24DC	24DC NO
Voltage tolerance (V)	AC 10-14/DC 8-14	11-14	7-12	AC 21-26/DC 18-26	20-26	18-26
Resistance (Ohm)	21	38	57	130	150	250
Power consumption AC (mA)	410	-	-	130	-	-
Power consumption DC (mA)	570	320	210	190	150	100
Max. preload AC (N)	98	-	-	98	-	-
Max. preload DC (N)	18	12	10	20	13	10
Loudness (1=low, 2=medium, 3=high)	2	1	1	1	1	1
Continuously powered (100%ED)	no	option	yes	no	option	yes

# ELECTRIC STRIKES HARTTE SF-SERIES



- for fire-resistant doors (classification EI120) certified according to 14846(certificate 1488-CPR-0508/W)
- fail-secure (NC normally closed) or fail-safe (NO normally open)
- symmetric housing
- size: width 20,5mm, height 75mm, depth 28,5mm, size of version with door status monitoring: width 20,5mm x height 81,2mm x depth 28,5mm
- mechanical strength – break-in resistance 3500 N (350 kg)
- mechanical strength – opening cycles 200.000
- DIN-left and DIN-right doors
- latch adjustable up to 4mm

**Models in HARTTE SF line:**

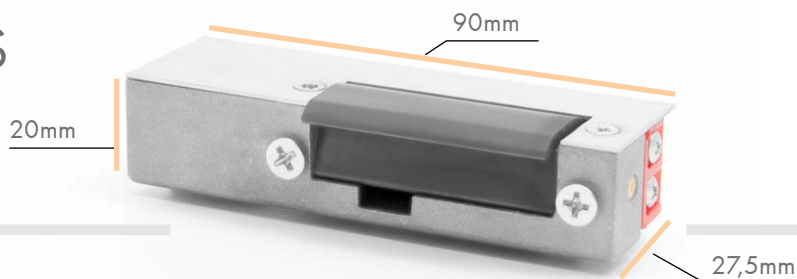
- normally closed
  - normally open (mounting on additional lock)
  - normally closed for continuous working
- Above models available with door status monitoring (M) and/or varistor (V)

**CATEGORY**

**COIL**

	12AC/DC	12DC	12DC NO	24AC/DC	24DC	24DC NO
Voltage tolerance (V)	AC 10-14/DC 8-14	11-14	7-12	AC 21-26/DC 18-26	20-26	18-26
Resistance (Ohm)	21	38	57	130	150	250
Power consumption AC (mA)	410	-	-	130	-	-
Power consumption DC (mA)	570	320	210	190	150	100
Max. preload AC (N)	98	-	-	98	-	-
Max. preload DC (N)	18	12	10	20	13	10
Loudness (1=low, 2=medium, 3=high)	2	1	1	1	1	1
Continuously powered (100%ED)	no	option	yes	no	option	yes

# ELECTRIC STRIKES BIRA ELP-SERIES



- for wooden fire-resistant doors (classification EI30) certified according to 14846 (certificate 1488-CPR-0508/W)
- fail-secure (NC normally closed) or fail-safe (NO normally open)
- size: width 20mm, height 90mm, depth 27,5mm, size of version with door status monitoring: width 20mm x height 97mm x depth 27,5mm
- mechanical strength - break-in resistance 3500 N (350 kg)
- mechanical strength - opening cycles 200.000
- DIN-left and DIN-right doors

## Models in HARTTE ELP line:

- normally closed
  - normally open (mounting on additional lock)
  - normally closed for continuous working
- Above models available with door status monitoring (M) and/or varistor (Y)

### CATEGORY

### COIL

	12AC	12DC	12DC NO	24AC/DC	24DC	24DC NO
Voltage tolerance (V)	7-14	6-14	8-14	11-26	16-26	17-26
Resistance (Ohm)	13,2	27	60	70	155	230
Power consumption AC (mA)	650	-	-	250	-	-
Power consumption DC (mA)	-	450	200	350	160	110
Max. preload AC (N)	220	-	-	220	-	-
Max. preload DC (N)	-	24	10	40	40	10
Loudness (1=low, 2=medium, 3=high)	2	1	1	2	1	1
Continuously powered (100%ED)	no	option	yes	no	no	yes

# MORTISE LATCH BOLT LOCK (ADDITIONAL LOCK) HARTTE ALR-SERIES

- mechanical mortise latch bolt lock with adjustable latch from 0mm to 16mm
- symmetric housing, 2 assembly holes
- DIN-left and DIN-right doors
- plate adjusted to aluminum doors (model ALR-A), steel doors (model ALR-S), wooden doors (ALR-W) and wooden narrow doors (ALR - WN)
- in models recommended to wooden doors, rounded face plate, in models recommended to metal doors square-cut face plate



### CATEGORY

### LATCH MODELS

	ALR-A	ALR-S	ALR-W	ALR-WN
aplication	aluminum doors	steel doors	wooden doors	wooden narrow doors
lock dimensions (mm)				
width	18	18	18	18
height	63	63	63	63
depth	37	37	37	37
lock dimensions with face plates(mm)				
width	20	24	24	20
height	110	110	110	110
depth	40	40	40	40

# BIRA

## **REGISTERED COMPANY SEAT**

Jaśminowa 1  
05-816 Michałowice  
Poland  
NIP 534 222 54 37  
bank account number  
66 1140 2017 0000 4402 0536 3561

## **PRODUCTION PLANT**

Jaśminowa 1  
05-816 Michałowice  
Poland

## **SALES OFFICE**

Dębowa 4  
05-816 Michałowice  
Poland  
phone number +48 22 723 90 17  
fax +48 22 300 15 67  
e-mail [bira@bira.pl](mailto:bira@bira.pl)  
EXPORT DEPARTMENT  
e-mail [export@bira.pl](mailto:export@bira.pl)