

BIRA



BIRA TRADE is a privately owned company specialising in development, manufacture and distribution of mechanical and electromechanical security solutions for access control systems. Know-how and 30-years experience on security market enable to offer products of the highest quality, designed and manufactured in accordance with the innovative technologies, the European standards and customers' expectations.

The company is located near to Warsaw in Poland where is the sales office and production site. Competent and well-qualified personell as well as appropriatelly equipped production site ensure high quality of products, flexibility of production and prompt deliveries to customers in Poland and abroad. In production processes the company uses innovative solutions and high quality components to meet expectations of customers' and final users.

Satisfaction of our customers is the most important for us, thanks to this we gain their trust and establish long-term cooperation. **BIRA TRADE** – wide offer of products, professional service and technical support

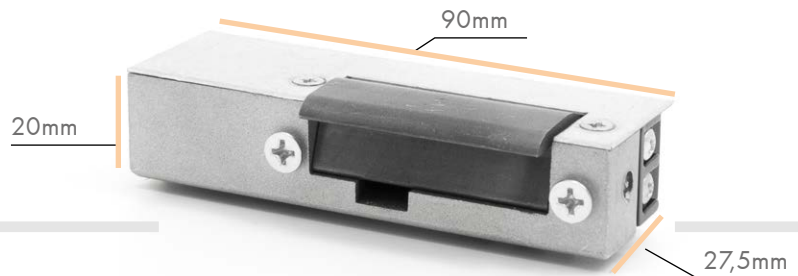
OUR PRODUCTS

BIRA TRADE has been producing electric strikes for more than 20 years which enables to respond to demands of both native and export markets. The company offers standard products for security systems including electric strikes, electromagnets, door holders, cabinet locks, mechanical locks as well as solutions dedicated for fire protection systems. **BIRA TRADE** produces fittings, mounting elements and accessories as well as tailor-made products developed and manufactured according to customers' requirements and for their special purposes.

BIRA TRADE produces solutions under BIRATRONIK, BIRA and HARTTE brand names which are commonly used in commercial and public buildings as well as private residences. As a producer **BIRA TRADE** offers also OEM production and development of innovative, tailor-made solutions.

Analysing market and customers' needs we are working continuously on new solutions and products, which will complete our offer and meet expectations of clients and at the same time improve comfort and safety of final users.

ELECTRIC STRIKES BIRA EL1- SERIES (BASIC)



- fail-secure (NC normally closed) or fail-safe (NO normally open)
- size: width 20mm, height 90mm, depth 27,5mm, size of version with door status monitoring 20mm x 97mm x 27,5mm
- mechanical strength – break-in resistance 6000 N
- mechanical strength – opening cycles 200.000
- DIN-left and DIN-right doors

Models in BIRA BASIC line:

- normally closed
- with hold-open function
- with mechanical unlocking
- with hold-open function and mechanical unlocking
- NO (normally open)
- low-consumption

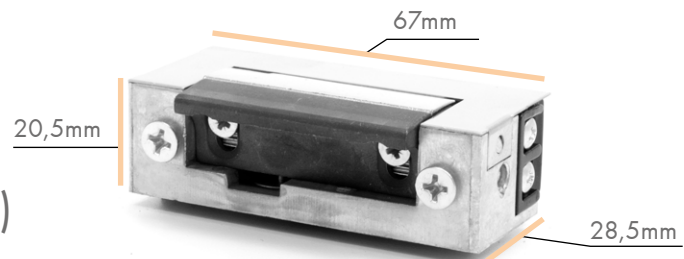
Above models available with door status monitoring (KZ) and/or varistor (Y).

CATEGORY

COIL

	12AC	12DC	12DC NO	24AC/DC	24DC	24DC NO
Voltage tolerance (V)	7-14	6-14	8-14	11-26	16-26	17-26
Resistance (Ohm)	13,2	27	60	70	155	230
Power consumption AC (mA)	650	-	-	250	-	-
Power consumption DC (mA)	-	450	200	350	160	110
Max. preload AC (N)	220	-	-	220	-	-
Max. preload DC (N)	-	24	10	40	40	10
Loudness (1=low, 2=medium, 3=high)	2	1	1	2	1	1
Continuously powered (100%ED)	no	option	yes	no	no	yes

ELECTRIC STRIKE BIRA ES1-SERIES (SYMMETRIC)



- fail-secure (NC normally closed)
- symmetric housing
- size: width 20,5mm, height 67mm, depth 28,5mm, size of version with door status monitoring 20,5 mm x 73,5mm x 28,5mm
- mechanical strength – break-in resistance 3500 N (350kg)
- mechanical strength – opening cycles 200.000
- DIN-left and DIN-right doors
- latch made out of high quality sintered steel
- latch adjustable up to 4mm

Models in BIRA SYMMETRIC line:

- normally closed
- with hold-open function
- with mechanical unlocking
- with hold-open function and mechanical unlocking
- low-consumption

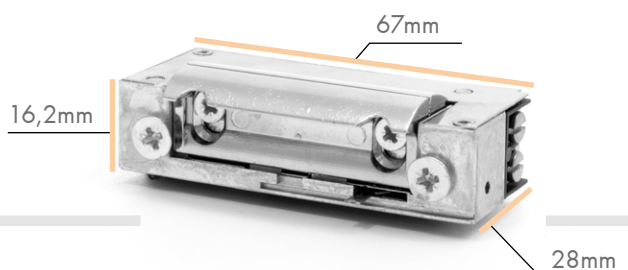
Above models available with door status monitoring (KZ) and/or varistor (Y).

CATEGORY

COIL

	12AC/DC	12DC	24AC/DC
Voltage tolerance (V)	9-14	10-14	20-26
Resistance (Ohm)	23,1	43	137
Power consumption AC (mA)	370	-	130
Power consumption DC (mA)	520	280	180
Max. preload AC (N)	19	-	13
Max. preload DC (N)	8	11	8
Loudness (1=low, 2=medium, 3=high)	2	1	2
Continuously powered (100%ED)	no	option	no

ELECTRIC STRIKE HARTTE XS-SERIES



- fail-secure (NC normally closed) or fail-safe (NO normally open)
- symmetric housing
- size: width 16,2mm, height 67mm, depth 28mm, size of version with door status monitoring (M): 16,2mm x 72,6mm x 28mm
- mechanical strength – break-in resistance 3000 N (300kg)
- mechanical strength – opening cycles 200 000
- DIN-left and DIN-right doors
- adjustable latch up to 3mm
- radial shape of the latch – when opening the latch is not going beyond the outline of electric strike

Models of HARTTE XS-series:

- normally closed
- with hold-open function
- with mechanical unlocking
- with hold-open and mechanical unlocking function
- NO (normally open)

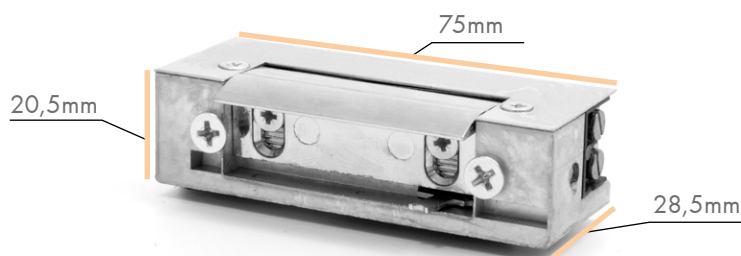
Above models available with door status monitoring (M) and/or varistor (V). XS-B-series recommended for doors with lock latch pressing on electric strike

CATEGORY

COIL

	12AC	12AC/DC	12DC	12DC NO	24AC/DC	24DC	24DC NO
Voltage tolerance (V)	7-14	AC 10-14/DC 9-14	9-14	9-14	AC 21-26/DC 16-26	20-26	18-26
Resistance (Ohm)	8	17,6	60	60	60	230	230
Power consumption AC (mA)	1100	480	-	-	280	-	-
Power consumption DC (mA)		680	200	200	400	104	104
Max. preload AC (N)	120	100	-	-	120	-	-
Max. preload DC (N)		70	68	20	70	54	20
Loudness (1=low, 2=medium, 3=high)	3	2	1	1	2	1	1
Continuously powered (100%ED)	no	no	option	yes	no	no	yes

ELECTRIC STRIKE HARTTE S-SERIES



- fail-secure (NC normally closed) or fail-safe (NO normally open)
- symmetric housing
- size: width 20,5mm, height 75mm, depth 28,5mm, size of version with door status monitoring (M): 20,5mm x 81,8mm x 28,5mm
- mechanical strength – break-in resistance 3500 N (350kg)
- mechanical strength – opening cycles 200.000
- DIN-left and DIN-right doors
- adjustable latch up to 4mm

Models of HARTTE S-series:

- normally closed
- with hold-open function
- with mechanical unlocking
- with hold-open and mechanical unlocking function
- NO (normally open)

Above models available with door status monitoring (M) and/or varistor (V).

CATEGORY

COIL

	12AC	12AC/DC	12DC	12DC NO	24AC/DC	24DC	24DC NO
Voltage tolerance (V)	7-14	AC 10-14/DC 8-14	11-14	7-12	AC 21-26/DC 18-26	20-26	18-26
Resistance (Ohm)	10	21	38	63	130	150	250
Power consumption AC (mA)	1200	410	-	-	130	-	-
Power consumption DC (mA)	-	570	320	200	190	150	100
Max. preload AC (N)	98	98	-	-	98	-	-
Max. preload DC (N)	-	18	12	10	20	13	10
Loudness (1=low, 2=medium, 3=high)	3	2	1	1	1	1	1
Continuously powered (100%ED)	no	no	option	yes	no	option	yes

ELECTROMAGNETIC LOCK HARTTE MG300-SERIES

- fail safe (NO)
- holding force 1800N(180kg) or 3000 N (300kg)
- no residual magnetism
- for surface or mortise mounting
- MOV surge protection built-in
- resistant to corrosion



MODEL	CATEGORY							
	Holding force (N)	Voltage (V)	Power consumption (mA)	Dimensions (mm)	Weight (kg)	Locking monitoring	Door monitoring	Mounting type
MG300.180SR	1800	12/24V DC	350/175	166x39x20,9	1,8	yes	no	surface
MG300.180MR	1800	12/24V DC	350/175	143x34x22	1,8	yes	no	mortise
MG300.300MR	3000	12/24V DC	500/250	187,5x38,5x26,5	2,0	yes	no	mortise
MG300.300M	3000	12/24V DC	500/250	187,5x38,5x26,5	2,0	no	no	mortise
MG300.300SL	3000	12/24V DC	500/250	268x48x25,5	2,0	yes (LED)	no	surface
MG300.300S	3000	12/24V DC	500/250	268x48x25,5	2,0	no	no	surface

ELECTROMAGNETIC LOCK HARTTE MG500-SERIES

- fail safe (NO)
- holding force 5300 N (530kg)
- no residual magnetism
- for surface mounting
- MOV surge protection built-in
- resistant to corrosion



MODEL	CATEGORY							
	Holding force (N)	Voltage (V)	Power consumption (mA)	Dimensions (mm)	Weight (kg)	Locking monitoring	Door monitoring	Mounting type
MG500.S	5300	12/24V DC	500/250	268x73x40,8	4,0	no	no	surface
MG500.SL	5300	12/24V DC	500/250	268x73x40,8	4,0	yes (LED)	no	surface
MG500.SCL	5300	12/24V DC	500/250	268x73x40,8	4,0	yes (LED)	yes (chip)	surface
MG500.2S	2x5300	12/24V DC	2x500/250	536x73x40,8	9,0	no	no	surface

ELEKTROMAGNETIC LOCK HARTTE

MSS-SERIES

- fail-safe (NO)
- holding force from 2000N(200kg) to 7500 N (750kg)
- no residual magnetism
- for surface mounting
- MOV surge protection built-in
- resistant to corrosion and atmosphere conditions
- stainless steel housing AISI316
- waterproof IP67



MODEL

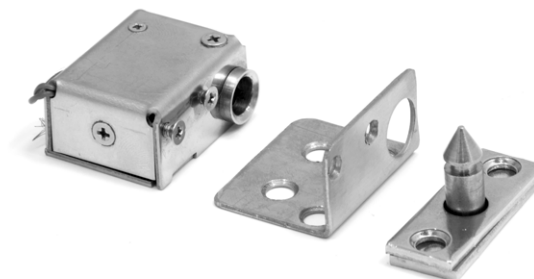
CATEGORY

	Holding force (N)	Voltage (V)	Power consumption (mA)	Dimensions (mm)	Weight (kg)	Locking monitoring	Door monitoring	Mounting type
MSS.200S	2000	12/24V DC	400/200	162x26x31	1,0	no	no	surface
MSS.400SSR	4100	12/24V DC	400/200	220x47x31	3,0	no	no	surface
MSS.400SFR	4100	12/24V DC	400/200	220x47x31	3,0	no	no	surface
MSS.750SSR	7500	12/24V DC	500/250	225x63x44	5,0	yes	no	surface
MSS.750SFR	7500	12/24V DC	500/250	225x63x44	5,0	yes	no	surface
MSS.750SR	7500	12/24V DC	500/250	225x63x44	5,0	yes	no	surface

CABINET ELECTRIC LOCK BIRA

ZS-SERIES

- fail-secure (NC normally closed)
- size width 18mm, height 37mm, depth 28mm
- mechanical strength - break-in resistance 1500 N (150 kg)
- for small lockers and drawers
- stainless steel housing
- reliable and strong elements



CATEGORY

MODEL

	12AC/DC	12DC	24AC/DC	24DC
Voltage tolerance (V)	12-24	12-24	23-30	23-30
Resistance (Ohm)	15	38	60	155
Power consumption AC (mA)	600	-	300	-
Power consumption DC (mA)	720	300	370	150
Max. preload AC (N)	-	-	-	-
Max. preload DC (N)	-	-	-	-
Pin length (mm)	23	23	23	23
Pin diameter (mm)	7	7	7	7
Weight (kg)	0,1	0,1	0,1	0,1

CABINET ELECTRIC LOCK HARTTE PU-SERIES

- fail-secure (NC normally closed)
- size width 26mm, height 56,5mm, depth 56,5mm
- mechanical strength – break-in resistance 1500 N (150 kg)
- for office furniture, lockers in the swimming pools, locker-rooms etc.
- plastic housing resistant to corrosion
- reliable and strong elements



CATEGORY	MODEL			
	12AC/DC	12DC	24AC/DC	24DC
Voltage tolerance (V)	10-14	10-14	22-26	20-28
Resistance (Ohm)	13	34	74	130
Power consumption AC (mA)	650	-	230	-
Power consumption DC (mA)	920	350	330	185
Max. preload AC (N)	7	-	5,5	-
Max. preload DC (N)	4	2	5	2,5
Pin length (mm)	18	18	18	18
Pin diameter (mm)	7	7	7	7
Weight (kg)	0,1	0,1	0,1	0,1

CABINET ELECTRIC LOCK HARTTE CBL-SERIES

- fail-secure (NC normally closed) or fail-safe (NO normally open)
- size of the lock: depth 32mm, width 29mm, height 94mm
- mechanical strength – break-in resistance 1500 N (150 kg)
- versatile electric lock for lockers for wide range of applications
- recommended for furniture, locker-rooms etc. including sliding doors



CATEGORY	MODEL	
	CBL.S	CBL.M
Type	NC or NO	NC or NO
Voltage (V)	12 V DC or 24 V DC	12 V DC or 24 V DC
Power consumption (mA)	187/88	200/100
Dimensions: depth, width, height	30 x 29 x 73	32 x 30 x 94
Dimensions bolt (mm)	40 x 19 x 35	40 x 19 x 35
Locking monitoring	no	yes
Weight (kg)	0,16	0,16

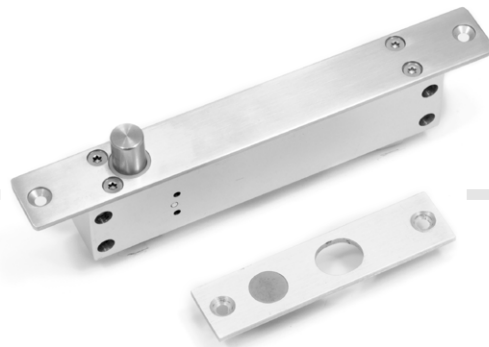
Solenoid electric bolt HARTTE SBL series



- fail-secure (NC normally closed) or fail-safe (NO normally open)
- mechanical strength – break-in resistance 8 000 N (800 kg) or 10 000 N (1000 kg)
- mechanical strength – opening cycles 500.000
- for mortise mounting vertically or horizontally (in the upper part of the frame with bolt released down)
- varistor and monitoring built-in
- automatic relock in case of no operation after 5 seconds
- induction distance equal or below 8mm
- prevention against locking doors in incorrect position

CATEGORY	MODEL		
	SBL12NMTL	SBLO0RMT	SBL12RM
Type	NC	NO	NO
Voltage (V)	12 V DC	12-24 V DC	12 V DC
Power consumption (mA)	900/150	950/150 (12V) 750/100 (24V)	950/100
Dimensions of housing with plate (mm)	260 x 30 x 48	205 x 35 x 41	205 x 35 x 41
Dimensions of mounting plate (mm)	100 x 25 x 3	90 x 25 x 2	90 x 25 x 2
Weight (kg)	1,6	0,72	0,72
Locking monitoring	yes	yes	yes
LED sygnalization	no	no	no
Timer	yes	yes	no
Mounting type	mortise	mortise	mortise

Solenoid electric bolt HARTTE XSBL-series



- fail-secure (NC normally closed) or fail-safe (NO normally open)
- mechanical strength – break-in resistance 10 000 N (1000 kg)
- mechanical strength – opening cycles 500.000
- for mortise mounting vertically or horizontally (in the upper part of the frame with bolt released down)
- timer build-in (delay set on 0, 3, 6 or 9 seconds)
- varistor and monitoring built-in
- induction distance equal or below 8mm
- prevention against locking doors in incorrect position

CATEGORY	MODEL	
	XSBL12NMT	XSBL12RMT
Type	NC	NO
Voltage (V)	12 V DC	12 V DC
Power consumption (mA)	960/130	960/130
Dimensions of housing with plate (mm)	192 x 25 x 37	192 x 25 x 37
Dimensions of mounting plate (mm)	100 x 25 x 3	100 x 25 x 3
Weight (kg)	0,74	0,74
Locking monitoring	yes	yes
LED sygnalization	yes	yes
Timer	yes	yes
Mounting type	mortise	mortise

ADDITIONAL LOCK (MORTISE LATCH BOLT LOCK) HARTTE ALR-SERIES

- mechanical lock with adjustable latch from 0mm to 16mm
- symmetric housing, 2 assembly holes
- plate adjusted to aluminum doors (model ALR-A), steel doors (model ALR-S), wooden doors (ALR-W) or wooden narrow doors (ALR - WN)
- rounded plate for wooden doors, square-cut plate for metal doors
- DIN-left and DIN-right doors

DIMENSIONS (mm)

lock without plate	
width	18
height	63
depth	37
lock with plate, models ALR-S, ALR-W	
width	24
height	110
depth	40
lock with plate, models ALR-A, ALR-WN	
width	20
height	110
depth	40



Timer HARTTE MG300.T

- electronic delay of locking/unlocking
- used for electric strikes and electro-magnets Hartte
- possibility to adjust time delay (0-90 sec)
- voltage 12V/24V DC
- power consumption 0,1 mA (max 1,5 A; 30V)
- starting with power on or on trigger



CABLE LOOP HARTTE MGL-SERIES – EXTERNAL

- made out of stainless steel, heads out of anodized aluminum
- length 300mm (MGL1) or 500mm (MGL2)
- loop diameter: internal 9,8mm, external 12mm

CONVERTER S

- enable change of current/voltage
- converter DC/AC improves preload force parameter for electric strikes powered by direct current

available models:

CON.12 converts 24 V into 12 V

CON.24 converts 12 V into 24 V

CON.AC converts direct current (DC) into alternating current (AC)



MOUNTING PLATES FOR ELECTRIC STRIKES

Flat plates

- made out of different materials: stainless steel, standard steel, anodized aluminum
- polished, plated, galvanized, painted
- used for wooden profiles (rounded), aluminum, steel (square-cut) or PVC
- standard length from 110mm to 250mm
- produced also on order

Angle plates

- made out of different materials: stainless steel, standard steel, anodized aluminum
- polished, plated, galvanized, painted
- used for wooden profiles (rounded), aluminum, steel (square-cut) or PVC
- standard length from 150mm to 250mm
- produced also on order

Special plates (plates and boxes)

- made out of different materials: stainless steel, standard steel, anodized aluminum
- polished, plated, galvanized, painted
- for doors, lockers and furniture
- wide offer of special plates with latch bolt guide securing profile
- produced also on order



MOUNTING ELEMENTS FOR ELECTROMAGNETIC LOCKS

Mounting bracket L

For doors opened outside.

- MG300.L for models MG300.300S, MG300.300SL
- MG500.L for all models MG500 series

Mounting bracket ZL

For doors opened inside.

- MG300.ZL1 for models MG300.300S, MG300.300SL
- MG300.ZL2 for models MG300.180SR, MG300.180MR
- MG500.ZL for all models MG500 series
- MSS.ZL for models MSS.750SSR, MSS.750SFR



BIRA

REGISTERED COMPANY SEAT

Jaśminowa 1
05-816 Michałowice
Poland
NIP 534 222 54 37
bank account number
66 1140 2017 0000 4402 0536 3561

PRODUCTION PLANT

Jaśminowa 1
05-816 Michałowice
Poland

SALES OFFICE

Dębowa 4
05-816 Michałowice
Poland
phone number +48 22 723 90 17
fax +48 22 300 15 67
e-mail bira@bira.pl
EXPORT DEPARTMENT
e-mail export@bira.pl